

ARC IMAGER

RADIOMETRIC THERMAL
PROCESS IMAGING



0 to 1000 °C / 32 to 1832 °F



LAND
AMETEK®
PROCESS & ANALYTICAL INSTRUMENTS

Distribué par :

COREMA

Tél. : +33 (0)5.56.30.66.12
Fax : +33 (0)5.56.30.62.24

Z.I. ch. de Bernichon
F-33360 LATRESNE

Mail : contact@corema.fr
Internet : www.corema.fr



QUALITY CUSTOMER SOLUTIONS

ARC IMAGER

RADIOMETRIC THERMAL PROCESS IMAGING

AMETEK LAND HAS BEEN MANUFACTURING PRECISION MEASURING EQUIPMENT SINCE 1947.

We are specialists in non-contact temperature measurement and combustion monitoring with applications across diverse industries such as steel and glass making, power generation and cement manufacture.

As part of AMETEK Process & Analytical Instruments Division since 2006, our customers benefit from the worldwide AMETEK sales and service team.

ARC is a range of General Purpose Thermal Process Imagers which are rugged enough to withstand heavy industrial applications, while compact enough for use in research and development and automation. ARC is a high resolution radiometric thermal imager providing detailed thermal images with unsurpassed temperature accuracy.

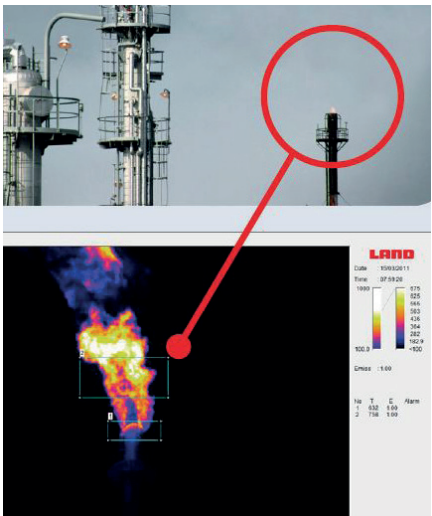
ARC is available with two temperature ranges (0 to 500 °C / 32 to 932 °F and 100 to 1000 °C / 212 to 1832 °F), four lenses, two frame rates and three software variants to meet exact user requirements.

Sophisticated data-processing is performed within the ARC Imager. Connection to an I/O module is made

via standard industrial Ethernet, offering stand-alone operation for a smarter image. ARC is supplied as standard with ARC Viewer software, which enables visualisation of the thermal data, while Viewer+ offers configuration of the Smart Camera features and LIPS allows full analysis, recording and playback of thermal data.

The range of four lenses enables viewing of any target, at any distance with outstanding image clarity. Coupled with this is the wide ambient temperature operating range making ARC suitable for everything from bench top monitoring to the most demanding industrial applications

ARC uses remote motorised focus allowing quicker installation and safer and convenient operation.



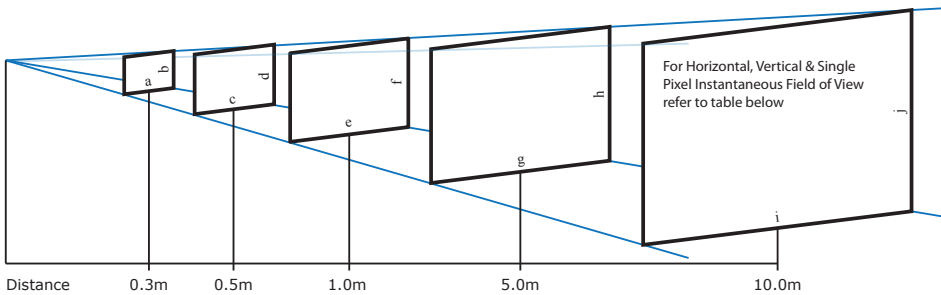
SPECIFICATION & DESIGN

- 1: VIEWING ANGLE**
11°, 22°, 44° or 60° angle provides thermal view, 384 x 288 resolution
- 2: OPTIONAL ATEX AND CLASS/DIVISION ENCLOSURES**
Suitable for hazardous area applications
- 3: IP65/NEMA 4 X SEALING**
Maintains performance in any environment
- 4: REMOTE MOTORISED FOCUS**
Quicker installation, safe and convenient operation
- 5: STANDARD INDUSTRIAL ETHERNET**
Direct connection to a range of I/O modules for simple, stand-alone operation
- 6: MONITORING SOFTWARE**
Image view with basic temperature data (Viewer), plus smart feature configuration (Viewer+), image recording, profiles, areas of interest, alarms

TYPICAL APPLICATIONS

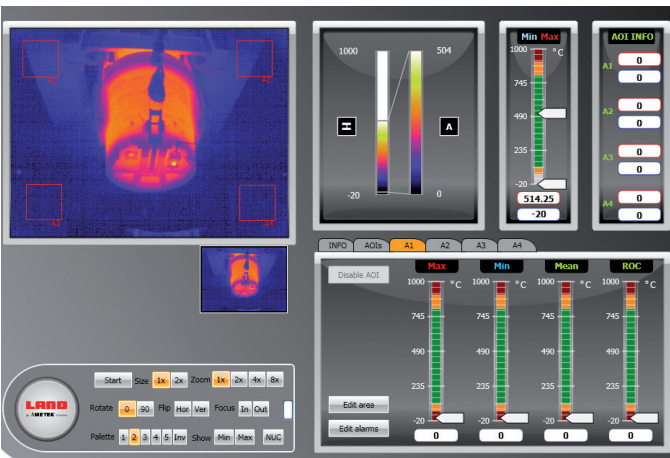
Automation	Process Control
Machine Vision	Flare Stack Monitoring
Coal Pile Hot Spot Detection	Medical
Critical Vessel Refractory	Petrochemical
Food	Minerals

FIELD OF VIEW LENS OPTION



	0.3m			0.5m			1.0m			5.0m			10.0m		
	a	b	IFOV	c	d	IFOV	e	f	IFOV	g	h	IFOV	i	j	IFOV
11°	-	-	-	0.09 m	0.07 m	0.25mm	0.19 m	0.144 m	0.50mm	0.96 m	0.72 m	250mm	1.92 m	1.44 m	5.0mm
22°	0.12 m	0.09 m	0.30mm	0.19 m	0.15 m	0.50mm	0.39 m	0.29 m	1.0mm	1.94 m	1.46 m	5.00mm	3.89 m	2.92 m	10.0mm
44°	0.24 m	0.18 m	0.63mm	0.40 m	0.30 m	1.05mm	0.81m	0.61 m	2.10mm	4.04 m	3.03 m	10.5mm	8.08 m	6.06 m	21.0mm
60°	0.35 m	0.26 m	0.90mm	0.58 m	0.43 m	1.50mm	1.15 m	0.78 m	3.00mm	5.77 m	4.33 m	15.0mm	11.55 m	8.66 m	30.0mm

VIEW OF LADLE



FEATURES & BENEFITS

- High resolution radiometric thermal imager** - detailed thermal images with unsurpassed temperature accuracy
- 4 Lens options** - view any target, at any distance with outstanding clarity
- Wide ambient temperature operating range** - install just about anywhere
- A smarter image** - 4 areas with min, max, mean and noise filter, individual emissivities, 4 alarms (high low) per area - all configurable from Viewer+ software
- Viewer software as standard** - user-friendly monitoring software enables visualisation of thermal data

ARC IMAGER

RADIOMETRIC THERMAL PROCESS IMAGING

SPECIFICATIONS

Measurement Range	
ARC-8-FOV-500-Rate:	0 to 500 °C / 32 to 932 °F
ARC-8-FOV-1000-Rate:	100 to 1000 °C / 212 to 1832 °F
Spectral Response:	8 to 14 µm
Frame Rate	
LF Models:	7.5 Hz
HF Models:	30 Hz
Image Pixels:	384 x 288
Accuracy:	±2% or ±2 °C
Sealing:	IP 65 / NEMA 4X
Software:	ARCViewer, ARCViewer +, LIPS
Field of View (Horizontal):	11°, 22°, 44° or 60°
Focus Range:	0.3 m > infinity (22°, 44° or 60°) / 0.5 m > infinity (11°)
Dimensions:	85 x 85 x 276 mm / 3.5 x 3.5 x 11 in (including lens)
Weight:	1.8 kg / 4 lbs
Ambient Range:	-20 to 60 °C / -4 to 140 °F
Operating Humidity:	5 % to 95 % (non-condensing)
Power Supply:	9 to 30 Vdc
EMC:	EN 61326



AMETEK Land's AMECare Performance Services ensure peak performance and maximum return on investment over the life of your equipment.

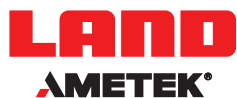
We will deliver this by:

- Proactively maintaining your equipment to maximize availability.
- Optimizing solutions to meet your unique applications.
- Enhancing user skills by providing access to product and application experts.

AMETEK Land's global service network provides unparalleled after-sales services to ensure you get the best performance and value from your AMETEK Land products. Our dedicated service centre teams and on-site engineers are trained to deliver the highest standard of commissioning, maintenance and after-sales support.

DISCOVER HOW OUR BROAD RANGE OF NON-CONTACT TEMPERATURE MEASUREMENT AND COMBUSTION & EMISSIONS PRODUCTS OFFER A SOLUTION FOR YOUR PROCESS

WWW.AMETEK-LAND.COM



www.ametek-land.com
land.enquiry@ametech.com

Land Instruments International
Stubley Lane, Dronfield
S18 1DJ
United Kingdom
Tel: +44 (0) 1246 417691

AMETEK Land China Service
Part A1 & A4, 2nd Floor Bldg. 1
No. 526 Fute 3rd Road East,
Pilot Free Trade Zone 200131
Shanghai, China
Tel: +86 21 5868 5111 ext 122

AMETEK Land - Americas
150 Freeport Road,
Pittsburgh, Pennsylvania, 15238
United States of America
Tel: +1 (412) 826 4444

AMETEK Land India Service
Divyasree N R Enclave, Block A,
4th Floor, Site No 1, EPIP Industrial Area
Whitefield, Bangalore- 560066
Karnataka, India
Tel: +91 - 80 67823240

For a full list of international offices, please visit our website www.ametek-land.com



APPLIES IN THE UK



APPLIES IN INDIA



APPLIES IN THE US



Copyright © 2008-18 LAND Instruments International.
Continuous product development may make it necessary to change these details without notice.

MARCOM 0375 ARC Rev 2